

# 11. Refrigerated Wall Display Shelves



## SUSHI-BEST-EASY

Self-service refrigerated display shelf for SUSHI

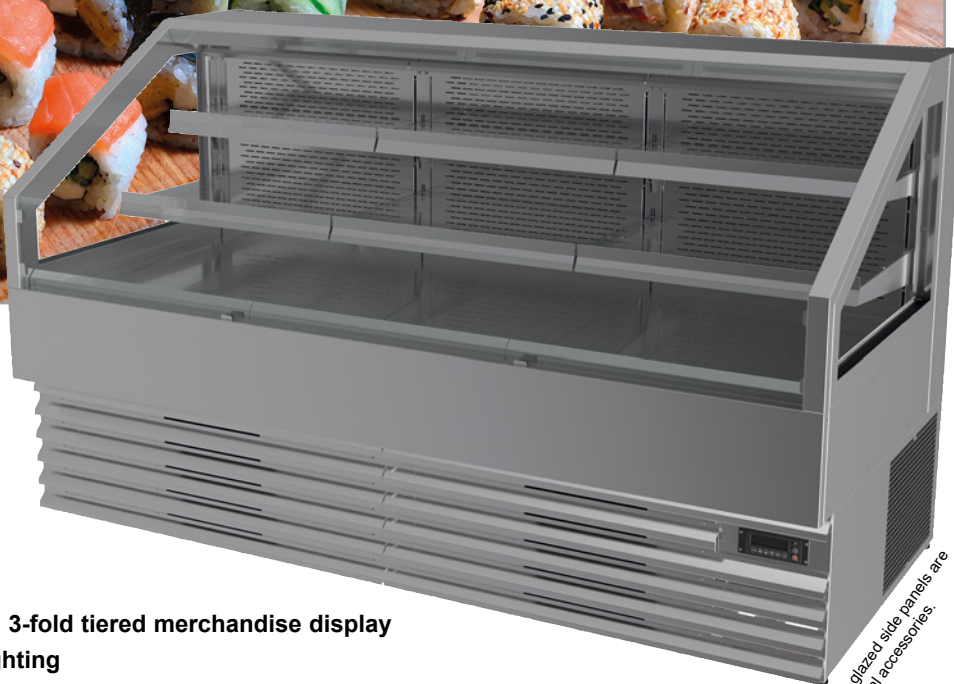
Also available with glazed side panels.



**WiHA**  
Toughened Safety Glass  
The front pane, side panes and glass shelves are made of toughened safety glass.

**WiHA**  
**LONG-LIFE**  
Longer operating life of the cooling unit

**WiHA**  
**LED**  
energy-saving & low-maintenance



The glazed side panels are special accessories.

- Optimal presentation on 3-fold tiered merchandise display
- Highly luminous LED lighting
- Effective cooling with additional cold air curtain
- Lifiable evaporator for easy cleaning

Sushi is the perfect food for the health-conscious gourmets: sushi tastes good, it's filling for a long time and it's low in calories. These positive qualities have made sushi a big seller also in Europe.


An important factor for sales success is the right presentation. The self-service refrigerated display shelf SUSHI-BEST-EASY is provided with several tiered display levels, on which the products can be offered in a clearly arranged way.


With the bright LED lighting it is possible to draw the attention of the customers to the products. The dimensions chosen allow a position of the refrigerated display shelf in front of a wall or the placement in the SUSHI preparation area.

The refrigerated display shelf SUSHI-BEST-EASY is available as ready-to-use device with cooling unit and controller.

11

Refrigerated Wall Display Shelves

SUSHI-BEST-EASY	With cooling unit and controller				
	 angled	Width [mm]	Depth [mm]	Height [mm]	Connection
Self-service version					
SUSHI-BEST-EASY 1000	33183	1040	950	1180	230V/1280W
SUSHI-BEST-EASY 1500	33184	1540	950	1180	230V/1450W
SUSHI-BEST-EASY 2000	33185	1996	950	1180	230V/1510W
SUSHI-BEST-EASY 3000	33187	2996	950	1180	230V/1550W

SUSHI-BEST-EASY BLACK	With cooling unit and controller	
	 angled	
Self-service version		
SUSHI-BEST-EASY 1000 BLACK	33188	
SUSHI-BEST-EASY 1500 BLACK	33189	
SUSHI-BEST-EASY 2000 BLACK	33190	
SUSHI-BEST-EASY 3000 BLACK	33192	



## Special Accessories

	<u>Art.-No.</u>
Drain fitting 1 1/4"	<b>3815</b>
(For size 2000 and 3000, two drain fittings are necessary.)	
Glazed side panel, left	<b>33198</b>
Instead of a closed side panel on the left (view from the customer side), the device is delivered with a double-glazed side panel.	
Glazed side panel, right	<b>33197</b>
Instead of a closed side panel on the right (view from the customer side), the device is delivered with a double-glazed side panel.	
Price label rail lower display area 1000	<b>33244</b>
Price label rail per glass shelf 1000	<b>33249</b>
Price label rail per glass shelf with stopper 1000	<b>33254</b>
Price label rail lower display area 1500 (two-piece)	<b>33245</b>
Price label rail glass shelf 1500 (two-piece)	<b>33250</b>
Price label rail with stopper per glass shelf 1500 (2-pcs)	<b>33255</b>
Price label rail lower display area 2000 (three-piece)	<b>33246</b>
Price label rail glass shelf 2000 (three-piece)	<b>33251</b>
Price label rail with stopper per glass shelf 2000 (3-pcs)	<b>33256</b>
Price label rail lower display area 3000 (four-piece)	<b>33248</b>
Price label rail glass shelf 3000 (four-piece)	<b>33253</b>
Price label rail with stopper per glass shelf 3000 (4-pcs)	<b>33258</b>

## For SUSHI-BEST-EASY BLACK:

	<u>Art.-No.</u>
Glazed side panel, left	<b>33287</b>
Instead of a closed side panel on the left (view from the customer side), the device is delivered with a double-glazed side panel.	
Glazed side panel, right	<b>33288</b>
Instead of a closed side panel on the right (view from the customer side), the device is delivered with a double-glazed side panel.	
Price label rail lower display area 1000	<b>33289</b>
Price label rail per glass shelf 1000	<b>33290</b>
Price label rail per glass shelf with stopper 1000	<b>33291</b>
Price label rail lower display area 1500 (two-piece)	<b>33293</b>
Price label rail glass shelf 1500 (two-piece)	<b>33294</b>
Price label rail with stopper per glass shelf 1500 (2-pcs)	<b>33295</b>
Price label rail lower display area 2000 (three-piece)	<b>33297</b>
Price label rail glass shelf 2000 (three-piece)	<b>33298</b>
Price label rail with stopper per glass shelf 2000 (3-pcs)	<b>33299</b>
Price label rail lower display area 3000 (four-piece)	<b>33301</b>
Price label rail glass shelf 3000 (four-piece)	<b>33302</b>
Price label rail with stopper per glass shelf 3000 (4-pcs)	<b>33303</b>

## Description

Refrigerated display shelf with circulating air for cooling packaged SUSHI products. Optimal presentation thanks to the 3-fold tiered merchandise display with bright LED lighting. Optical doubling of the goods by reflective surfaces. Easy to clean thanks to the liftable evaporator technology. Effective cooling by cold air curtain. Interior and exterior surfaces completely made of stainless steel. Temperature < 5°C at 25' 60% relative humidity (climate class 3 according to DIN EN ISO 23953). Commercial product for the installation in stationary food and service counter.

## Design

Interior pan made entirely of stainless steel, material 1.4301, with flush threaded drain fitting (1 1/4"). CFC-free insulation, the exterior is made of stainless steel, surface ground. Inside the pan are circulating air evaporators with coated surface, and quiet low-voltage ventilators for air circulation. Located above the circulating air evaporators are merchandise displays made of ground stainless steel and two glass shelves. To clean the bottom of the inner pan, the circulating air evaporators and ventilators can be folded upwards after removing the merchandise displays. The evaporator is locked in the top position via gas pressure springs so that the tub is freely accessible for cleaning. The shelves are equipped with bright LED lightings and are height adjustable in several steps.

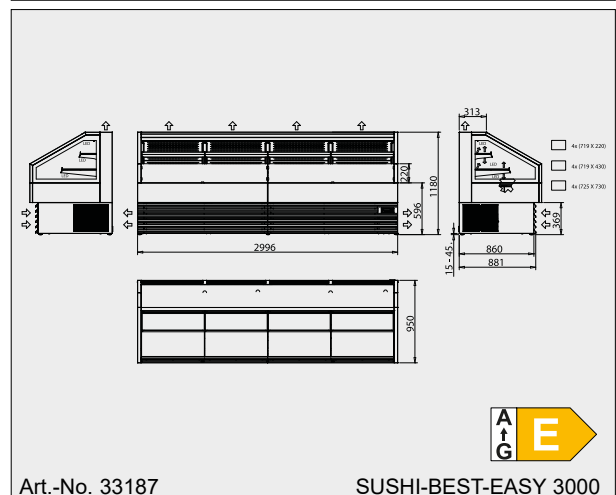
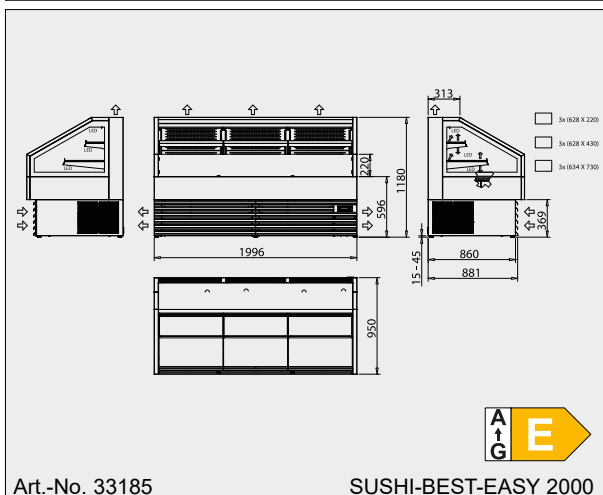
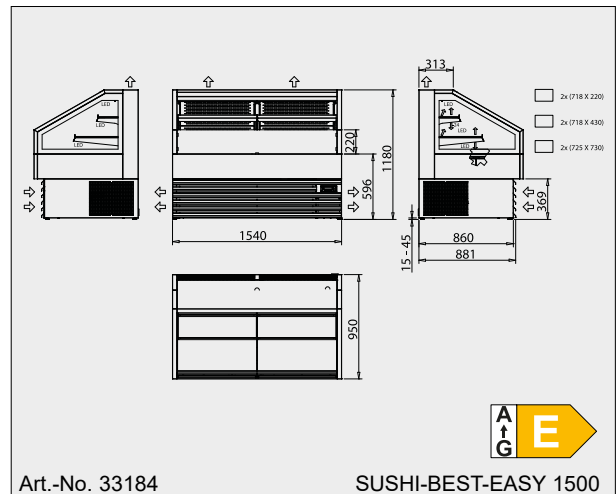
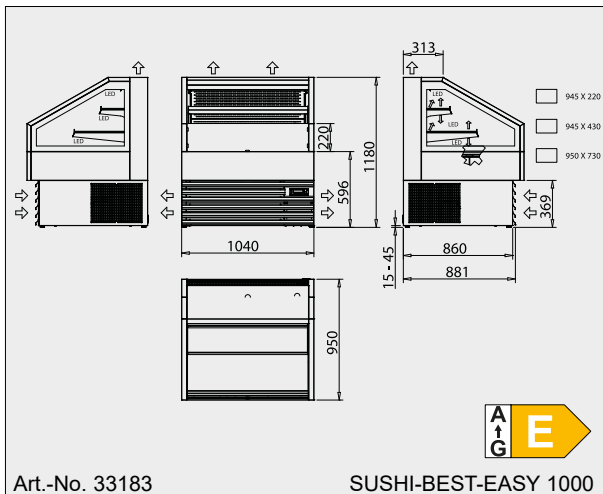
The base frame below the cooling pan is completely clad with stainless steel on the outside, surface ground. The feet are equipped with height-adjustable screw studs to compensate for uneven floors. The defrost and temperature controller is fully pre-assembled in the panel of the base.

## Cooling Unit Model

The cooling unit is mounted in lower tubular frame rack. The waste heat of the cooling unit is safely discharged upwards via a channel integrated in the rear wall. (The top may not be closed in this area by on-site cladding panels or the like.) For easy cleaning of the condenser, the front base plate can be removed without tools.

**Please note carefully:**  
The decorative panel on the operator side of the cooling unit must not be closed because otherwise proper ventilation of the cooling unit cannot be guaranteed. Likewise, the upper hot air outlet on the top of the device must not be blocked. Lateral ventilation openings should be kept as free as possible.

Delivery includes:  
- Expansion valves  
- Digital defrost and temperature controller  
- Cooling unit mounted in the base



The drawings are shown with special accessory that is not included in the scope of delivery; more drawings are available on [www.wiha-web.com](http://www.wiha-web.com) under "Info Centre / Customer Area".