

1. Air Chiller Units

straight installation



1

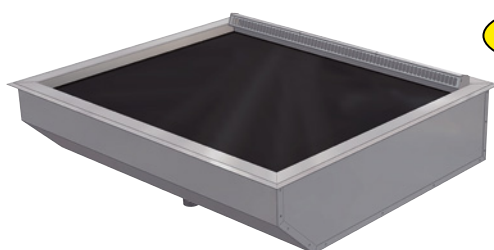
Straight
Installation

Bäcker-Snack® BG IMPULSE

The black merchandise display (inclined) enables a perfect presentation

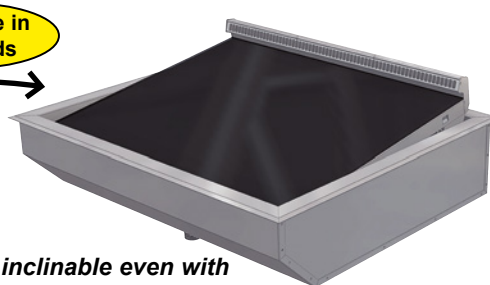


Preferred application:
Cakes, tartes, snacks with a merchandise height up to 6 cm.



Horizontal merchandise display for cream cakes.

adjustable in
2 seconds



Simply inclinable even with loaded merchandise display.

Base element UTB 51 optionally available, see table on page 386.

Food stays fresh for longer thanks to the patented FRESHNESS SYSTEM

- **BLACK-GLASS** – merchandise display is made of toughened glass with scratch-resistant, black shiny surface
- **Inclinable merchandise display (MOVE-UP)**
- The air cooler can be easily folded down (**MOVE-DOWN**), in case of R134a/R513A with additional gas pressure springs.
- Longer operating life of the cooling unit (**LONG-LIFE**)

- Hygienic base with round shaped corners (**ROUND-BOTTOM**)
- Easy cleaning of the air blow-off area (**EASY-CLEAN**)
- 4°C cooling technology
- 2 air speeds
- Lifiable evaporator
- Separate mounting frame
- Durable technology

WIHA Bäcker-Snack BG IMPULSE	For external cooling unit	With cooling unit and controller	Cooling power [-10°ET]	Connection cooling unit	
Model	Art.-No.	Art.-No.			
Bäcker-Snack BG IMPULSE 600 *	25701	25707	370 W	230V/270W	■
Bäcker-Snack BG IMPULSE 800	25702	25708	450 W	230V/350W	■
Bäcker-Snack BG IMPULSE 1200	25703	25709	605 W	230V/390W	■
Bäcker-Snack BG IMPULSE 1600	25704	25710	825 W	230V/540W	■
Bäcker-Snack BG IMPULSE 2000 D (2 air coolers)	25706	25712 **	1060 W	230V/1023W	■

Delivery includes mounting frame. The refrigeration units for external cooling units include an expansion valve for R134a/R513A and built-in temperature sensors.

The patented WIHA FRESHNESS SYSTEM, protective machine cover and condensate pan/drain trap are available as accessories.

* Not available with FRESHNESS SYSTEM. ** Without base element, the cooling unit is connected via refrigerant couplings.

The drawings are available on www.wiha-web.com under "Info Centre / Customer Area".

Special Accessories

	Art.-No.
Condensate pan mounted under the colling unit	33196
Drain fitting 1 1/4" for connecting to the customer's drain	3815
Reference thermometer for the customer side TPE 2	2182
TMP 620 controller for external cooling unit	12201
TMP 630 instead of TMP 620 with 2 freely usable outputs	12210
Detachable control panel (SPLIT-CONTROL)	12219
extra charge for device with cooling unit in the base housing	
Protective machine cover type 370-825	33194
Air cooler for operation with refrigerant CO₂	10197
(price per air cooler, design see page 384)	

Patented WIHA FRESHNESS SYSTEM see page 31.

Description

Chiller unit with circulating air for cooling cakes, tarts and snacks with a merchandise height of up to 6 cm. The effective merchandise display made of black toughened glass can be set horizontally or at an angle for impulse sale (MOVE-UP FUNCTION).

To operate it, the customer should provide a glass top that should only be open on the air blow-off side.

Temperature: < 5°C at 25°C/60% relative humidity (climate class 3 according to DIN EN ISO 23953).

Commercial product for the installation in stationary food and service counter.

Design

Interior pan is made entirely of stainless steel, material 1.4301, with flush threaded drain fitting (1 1/4") and round shaped hygienic corners (ROUND-BOTTOM) that are easy to clean. Pressure-injected expanded polyurethane insulation (CFC-free). The exterior is made of galvanised sheet steel. Inside the pan is a circulating air evaporator with coated surface and quiet low-voltage ventilators (12 V DC) for air circulation. Located above the circulating air evaporator is a stainless steel bearing surface with a merchandise display on top, which is made of toughened glass with scratch-resistant, black shiny surface.

The air blow-off area can be easily unfolded, so that the inner surfaces can be cleaned of crumbs and remains of cream (EASY-CLEAN). To clean the pan bottom, the merchandise display with circulating air evaporator and ventilators can be folded upwards and locked in the top position via gas pressure springs. To clean the surfaces of the evaporator, the impulse nozzle can be swung up and then the evaporator can be folded down (MOVE-DOWN TECHNOLOGY) when the merchandise display is open. To clean the area behind the pan or to carry out servicing, the merchandise display can be moved forwards (MOVE-AWAY TECHNOLOGY).

Installation is made easy by the mounting lip and stainless steel mounting frame. The surface of the mounting frame is ground.

For external cooling unit

Delivery includes:

- Expansion valve for R134a/R513A
- Built-in temperature sensor and defrost sensor

Cooling Unit Model

Description see „Bäcker-Snack Standard“ (page 10).