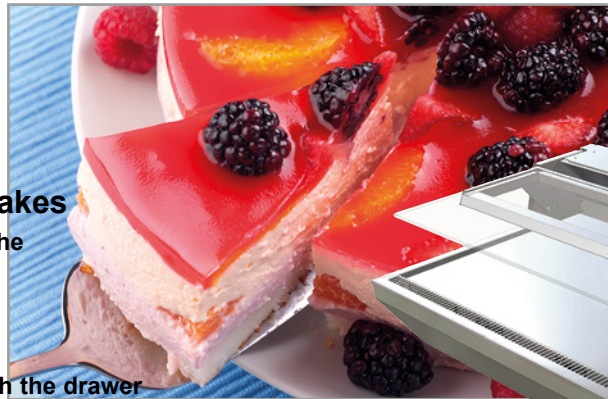


Kondito STANDARD with easy-access shelf

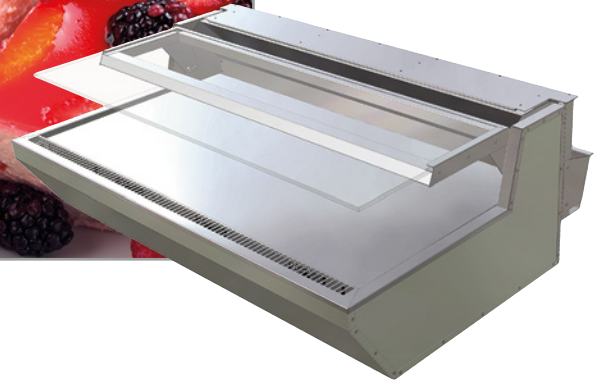
Pull-out air chiller unit for cakes and cream cakes



2
Tiered
Installation

Perfect climate for cakes

- Longer operating life of the cooling unit (LONG-LIFE)
- Extra-large evaporator
- Lifiable evaporator
- Service-friendly
- Worktop is pulled out with the drawer
- Easy-access shelf with lighting
- Durable Papst ventilators
- Shock absorbers for a smooth closing



Kondito STANDARD with easy-access shelf Model	For external cooling unit Art.-No.	With cooling unit and controller Art.-No.	Cooling power [-10°ET]	Connection cooling unit	
Kondito STANDARD 800 w. easy-access shelf *	11010	20642	605 W	230V/450W	■ ■
Kondito STANDARD 1200 w. easy-access shelf **	11011	20643	825 W	230V/600W	■ ■ ■

The refrigeration units for external cooling units include an expansion valve for R134a/R513A and built-in temperature sensors.
 * Usable display area: width 814 mm, depth 640 mm ** Usable display area: width 1214 mm, depth 640 mm

Special Accessories

	Art.-No.
Condensate pan mounted under the cooling unit	33196
Drain fitting 1 1/4" with 1.5 m hose	3830
TMP 620 controller for external cooling unit	12201
TMP 630 controller instead of TMP 620 with 2 freely usable outputs	12210
Detachable control panel (SPLIT CONTROL)	12219
extra charge for device with cooling unit in the base housing	
Protective machine cover type 605-825	33195

Design

Interior pan is made entirely of stainless steel, material 1.4301, with flush threaded drain fitting (1 1/4") and hygienic corners that are easy to clean. Pressure-injected expanded polyurethane insulation (CFC-free).
 After pulling out the drawer, the easy-access shelf and the evaporator can be folded upwards along with the ventilators and air baffles. The smooth stainless steel pan bottom can thus be easily accessed for cleaning. Quiet low-voltage ventilators (12 V DC) for air circulation.
 The work surface is mounted on the refrigerated drawer on site and is pulled out together with the drawer.

For external cooling units

- Delivery includes:
- Expansion valve for R134a/R513A
 - Built-in temperature sensor and defrost sensor

Description

Pull-out air chiller unit for cooling cakes and cream cakes with a merchandise height of up to 15 cm in the merchandise drawer and up to 8 cm on the easy-access shelf.

To operate it, the customer should provide a glass top that should only be open on the air blow-off side.

Temperature: < 7°C at 25°C/60% relative humidity (climate class 3 according to DIN EN ISO 23953).

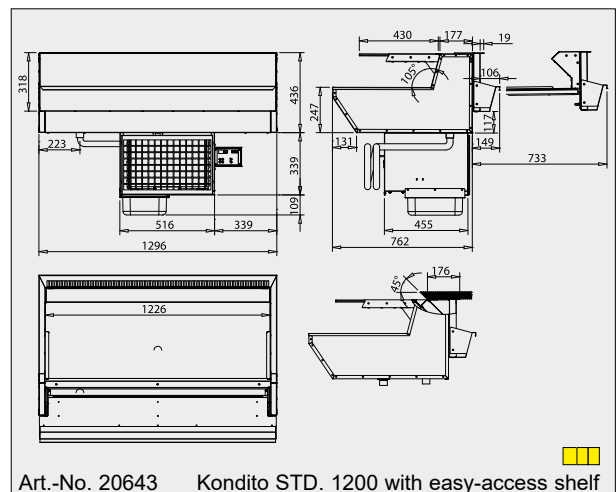
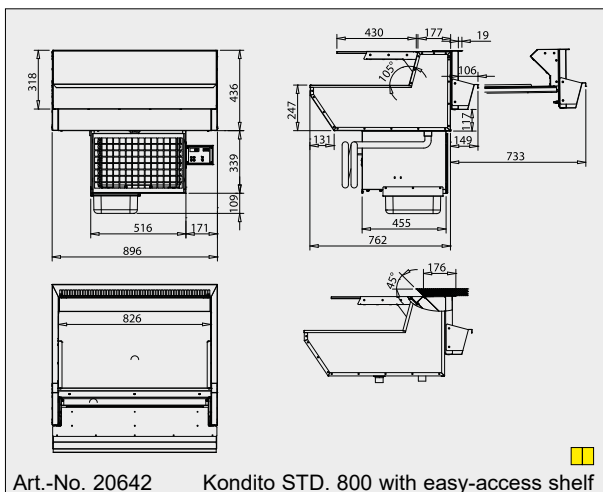
Commercial product for the installation in stationary food and service counter.

Cooling Unit Model

The cooling unit is encased in a stainless steel housing and is located beneath the cooling pan. It is easy to remove for servicing.

The TMP 620 digital defrost and temperature controller is mounted right next to the cooling unit. Two air speeds can be selected for different food. A freely usable output can be used for counter lighting.

With WIHA-LONG-LIFE for a longer operating life of the cooling unit.



The drawings are shown with special accessory that is not included; more drawings are available on www.wiha-web.com under "Info Centre / Customer Area".