

Safety Heat Radiator 300 W

Heat Radiator with small infrared portion and very bright light

Built-In Heat Radiator 300 Watts

Heat radiator with small infrared portion (low heat dissipation) and bright light. Suitable for bakery products, pizzas, etc. on hotplates. Lower infrared portions means that food dries out less and remains fresh for longer.

Longer lifespan due to additional protection tube made of quartz glass. Water splash, cleaning agents, fingerprints, etc., can no longer come into contact with the lamp body. Protection of the food in case of bursting lamp body.

Included with delivery is a 1.5 m long silicone connecting cable (without mains plug or without switch).

Please note: Make sure that there is good ventilation when installing the radiator. Hot air must be able to rise freely upwards. Maximum humidity of 75% at the installation place. Water condensation must not occur at the place of installation.

Distance to the surface to be kept warm approx. 300 mm. Keep warm area maximum approx. 400 mm x 400 mm.

Dimensions: length 250 mm x width 80 mm x height 65 mm
Connection: 230V/300W; colour temperature 3000 K

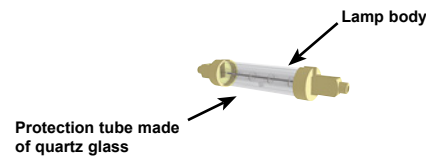
Art.-No.
2490

Replacement Halogen Tube 300 W
with protection tube made of quartz glass

V-1286



- Advantages:**
- Longer lifespan
 - Shatter protection
 - Optimized power range



Reflector Bars with 300 Watts Safety Halogen Infrared Radiators (can be used together with lighting covers, see chapter 15)

Depending on the length equipped with several 300 W heat radiators. Suitable for bakery products, pizzas, etc. on hotplates.

Included with delivery is a 1.5 m long silicone connecting cable (without mains plug or without switch).

Please note: Make sure that there is good ventilation when installing the radiator. Hot air must be able to rise freely upwards.

Maximum humidity of 75% at the installation place. Water condensation must not occur at the place of installation. Distance to the surface to be kept warm approx. 300 mm.

Length	Distance between supports	Art.-No.	Connection
330–620 mm	L+7 mm	5230	230V/300W
620–910 mm	L+7 mm	5231	230V/600W
910–1200 mm	L+7 mm	5232	230V/900W
1200–1490 mm	L+7 mm	5233	230V/1200W
1490–1780 mm	----	5234	230V/1500W
1780–2000 mm	----	5235	230V/1800W

The length of the reflector bar must be 7 mm smaller than the center-to-center distance of the glass supports.

Included with delivery is a 1.5 m long silicone connecting cable (without mains plug). An on/off switch should be attached to the outside. The vent holes must not be covered – hot air must be able to rise upwards unhindered. The reflector bar is not suitable for the WIHA glass support system TOP 3535 SB.

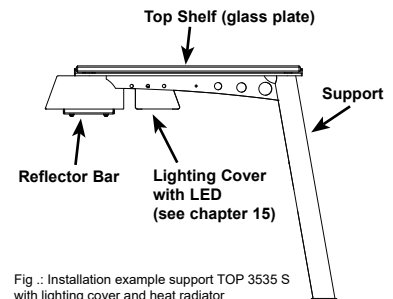
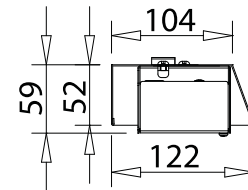
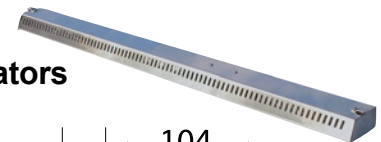


Fig.: Installation example support TOP 3535 S with lighting cover and heat radiator

Safety Heat Radiator 500 W

Heat Radiator with high infrared portion

Built-In Heat Radiator 500 Watts

New developed heat radiator with high infrared portion for a large heat dissipation. Suitable for casseroles, roasts, vegetables, bakery products etc.

Longer lifespan due to additional protection tube made of quartz glass. Water splash, cleaning agents, fingerprints, etc., can no longer come into contact with the lamp body. Protection of the food in case of bursting lamp body.

Included with delivery is a 1.5 m long silicone connecting cable (without mains plug or without switch).

Please note: Make sure that there is good ventilation when installing the radiator. Hot air must be able to rise freely upwards. Maximum humidity of 75% at the installation place. Water condensation must not occur at the place of installation.

When used above a Bain-Marie, an operation is only permitted together with the Bain-Marie to avoid condensation.

Distance to the surface to be kept warm approx. 300 mm to 350 mm.

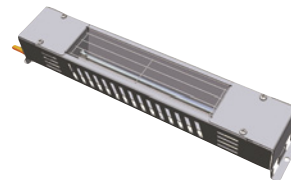
Keep warm area maximum approx. 500 mm x 500 mm.

Dimensions: length 355 mm x width 60 mm x height 60 mm
Connection: 230V/500W

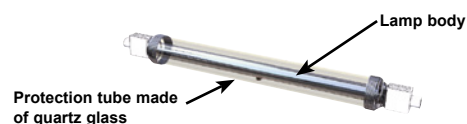
Art.-No.
5204

Replacement Halogen Infrared Tube 500 W
with protection tube made of quartz glass

Art.-No.
V-4415

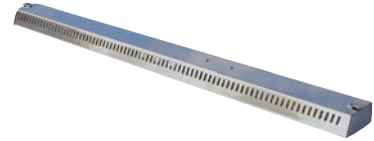
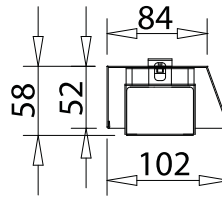


- Advantages:**
- Longer lifespan
 - Shatter protection
 - Optimized power range



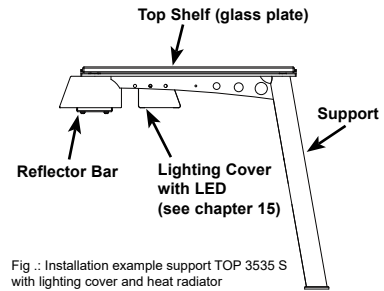
Reflector Bar with 500 Watts Safety Halogen Infrared Radiator (can be used together with lighting covers, see chapter 15)

Depending on the length equipped with several built-in 500 W heat radiators. Included with delivery is a 1.5 m long silicone connecting cable (without mains plug or without switch).
 Please note: Make sure that there is good ventilation when installing the radiator. Maximum humidity of 75% at the installation place. Water condensation must not occur at the place of installation.
 Hot air must be able to rise freely upwards. When used above a Bain-Marie, an operation is only permitted together with the Bain-Marie to avoid condensation. Distance to the surface to be kept warm approx. 300 mm to 350 mm. Depth of the keep warm area 500 mm.



Length	Distance between supports	Art.-No.	Connection
435–830 mm	L+7 mm	5205	230V/500W
830–1225 mm	L+7 mm	5206	230V/1000W
1225–1620 mm	L+7 mm	5207	230V/1500W
1620–2000 mm	----	5208	230V/2000W

The length of the reflector bar must be 7 mm smaller than the center-to-center distance of the glass supports.
 Included with delivery is a 1.5 m long silicone connecting cable (without mains plug). An on/off switch should be attached to the outside. The vent holes must not be covered – hot air must be able to rise upwards unhindered. The reflector bar is not suitable for the WIHA glass support system TOP 3535 SB.



Heat Bridge for Hanging or Free-Standing

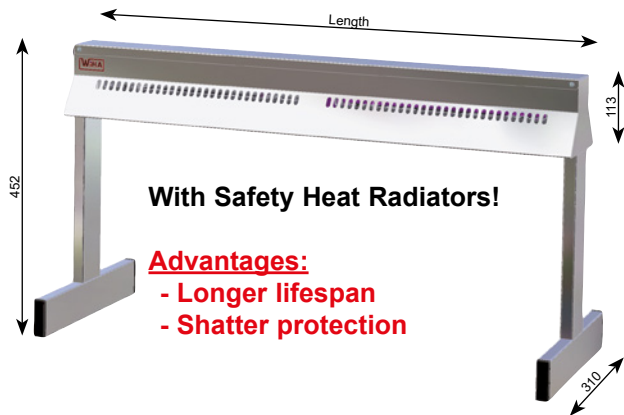
With individually switchable radiators

- Radiator units individually switchable
- Equipped with 500 Watts radiator modules
Radiator with high infrared portion and bright light.
- Double-protected!
Longer lifespan and shatter protection by protection tube made of quartz glass above the lamp body.
Additional mechanical protection by stainless steel grille.



Heat Bridges for Hanging		
Length	Art.-No.	Connection
650 mm	14421	230V/500W
850 mm	14422	230V/1000W
1000 mm	14423	230V/1000W
1200 mm	14424	230V/1500W

Heat Bridges for Free-Standing		
Length	Art.-No.	Connection
650 mm	14401	230V/500W
850 mm	14402	230V/1000W
1000 mm	14403	230V/1000W
1200 mm	14404	230V/1500W



Included with delivery is a 1.5 m long silicone connecting cable with mains plug. Please note: Make sure that there is good ventilation when installing the radiator. Hot air must be able to rise freely upwards. Maximum humidity at the installation place 75%. Water condensation must not occur at the place of installation. Make sure that there is a distance of 300 mm between heat radiator and the keep warm surface.

Design

Heat radiator with high infrared portion for heat dissipation. Suitable for casseroles, roasts, vegetables etc. The heat radiator is entirely made of stainless steel. 500 Watts heating elements are mounted inside of the reflector. They can be switched separately by a built-in switch. The heating elements are protected by a quartz glass tube and a metal grille. Water splash, cleaning agents, fingerprints etc. can no longer come in contact with the lamp body.