

# 5. Display Cases – refrigerated

Euro-Counter accessories



## Euro-Counter Combinations

The flexible concept for refrigerated display cases with single glazing

### Description

Both Euro-Counters, which are mounted side by side, are equipped with a stainless steel mounting bracket on the connection side instead of the side pane. Between both stainless steel brackets is a shared glass partition for separation. This glass partition can be drawn out towards the customer side for cleaning. Delivery includes a decorative cover made of stainless steel.

Optically, several Euro-Counters installed next to each other create ONE compact display case unit without disturbing gaps and with an enlarged display area for the goods.



### Surcharge for the connection of display cases

The refrigerated display cases to be combined are each equipped with a connector on the connection side. A left and a right display case connector is necessary for the connection of two display cases.

Refrigerated display cases of the series "Euro-Counter" can be combined, which have the same height (520 mm or 710 mm) and the same glass construction (round or angled or slanted).

#### Round glass construction, 710 mm high

Connector 710 BE left  
Connector 710 BE right

**Art.-No.**

**10445**  
**10446**

#### Angled glass construction -E-, 710 mm high

Connector 710 E BE left  
Connector 710 E BE right

**10449**  
**10450**

#### Slanted glass construction -S-, 710 mm high

Connector 710 S BE left  
Connector 710 S BE right

**17310**  
**17311**

(BE = serve-over version)

Note:

Refrigerated display cases cannot be combined together with heated display cases, because the difference in temperature is too high within the connection area. A combination between refrigerated display cases and non-cooled display cases is possible.

The display case combination will be delivered as prefabricated single units, so that they can be easily installed side by side into counter composition.

Calculation of the recess size:

The recess length of the combination is the result of the sum of the recess length from each unit minus 3 mm per connection point. The recess length is specified in the catalogue drawings.

### Model

#### Round glass construction, 520 mm high

Connector 520 BE left  
Connector 520 BE right

**Art.-No.**

**10443**  
**10444**

#### Angled glass construction -E-, 520 mm high

Connector 520 E BE left  
Connector 520 E BE right

**10447**  
**10448**

#### Slanted glass construction -S-, 520 mm high

Connector 520 S BE left  
Connector 520 S BE right

**17308**  
**17309**

**5**  
Serve-Over  
Display Cases

## Euro-Counter BE with Snack Racks

Many baguettes can be displayed for sale in this way!



In railway stations, in subway stations, in shopping arcades...  
The Euro-Counter is ideally suited for the sale of sandwiches and baguettes.



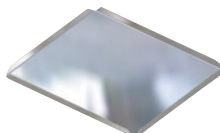
**The small model 800 provides space for 60 baguettes or 120 sandwiches.**

### Display Trays

Design: Made entirely of stainless steel, ground surface.  
Set on edge on 4 sides, open corners.

**Dimensions**  
600 x 400 x 10 mm  
600 x 200 x 10 mm  
400 x 400 x 10 mm

**Art.-No.**  
**3670**  
**3671**  
**3655**



### Snack Racks

For presentation of snacks. Made entirely of stainless steel.

**Dimensions**  
90 x 595 mm (7 compartments) **Art.-No.** **2676**  
180 x 595 mm (7 compartments) **2681**  
180 x 390 mm (5 compartments) **2682**

