

# 5. Display Cases – refrigerated

for serve-over



## Euro-Counter BE

Two or three refrigerated levels for Euro-Norm trays

**Freshness System**  
(Special Accessory)  
Patented

**LONG-LIFE**  
Longer operating life of the cooling unit

**SPLIT-CONTROL**  
(Special Accessory)  
Flat and removable control panel

**Soft-Close**  
Soft-closing sliding doors  
Special Accessory

Base element UTB 51 optionally available, see table on page 386.

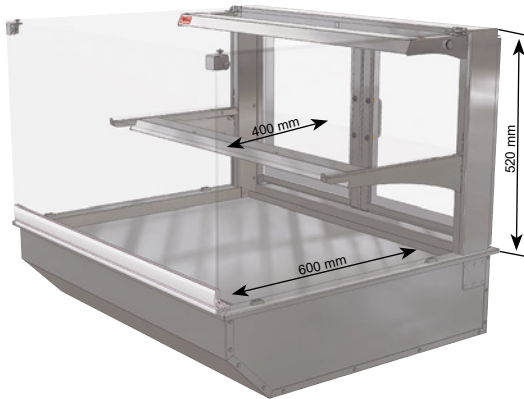
**Toughened Safety Glass**  
The front pane, side panes and glass shelves are made of toughened safety glass.

Option: Light colour adjustable, see page 141.

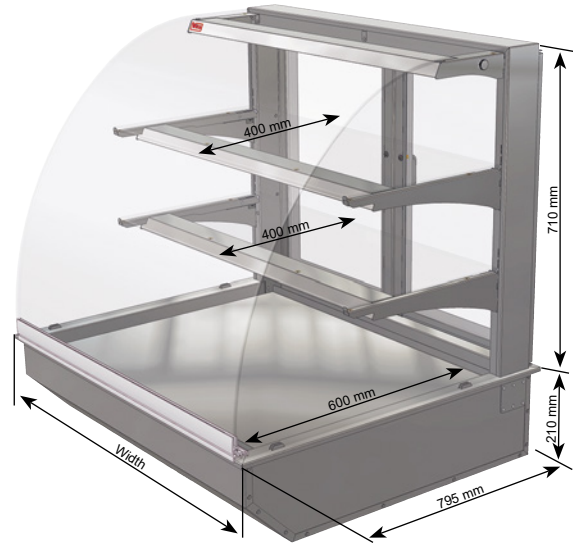
**MOVE-DOWN**  
Patented

**MOVE-AWAY**  
Patented

**LED**  
energy-saving & low-maintenance



**2 refrigerated levels for Euro-Norm trays (400 mm x 600 mm)**



**3 refrigerated levels for Euro-Norm trays (400 mm x 600 mm)**

**5**  
Serve-Over Display Cases

Euro-Counter 520 BE Serve-over version Height glass top 520 mm	For external cooling unit incl. controller			With cooling unit and controller			Width [mm]	Cooling power [-10°ET]	Connection	
	round	angled	slanted	round	angled	slanted				
Euro-Counter 520 BE - DT 400 *	----	17335	17337	----	17336	17338	522	370 W	230V/350W	
Euro-Counter 520 BE - DT 800	10220	10401	17300	10222	10403	17302	922	370 W	230V/350W	
Euro-Counter 520 BE - 1200	10221	10402	17301	10223	10404	17303	1322	450 W	230V/400W	
Euro-Counter 520 BE - 1600	10670	10671	10672	10680	10681	10682	1722	605 W	230V/500W	
Euro-Counter 520 BE - 1600 D **	14801	14803	14805	14802	14804	14806	1722	605 W	230V/500W	
<b>Door opening &gt; 400 mm</b>										
Euro-Counter 520 BE - 800	22448	11588	22449	22450	22451	22452	922	370 W	230V/350W	

The FRESHNESS SYSTEM (circulated air disinfection) protective machine cover and condensate pan/drain trap are available as accessories.

The version "DT" has wing doors on the operator side instead of sliding doors.

\* Not available with FRESHNESS SYSTEM.

\*\* Two temperature zones.

Euro-Counter 710 BE Serve-over version Height glass top 710 mm	For external cooling unit incl. controller			With cooling unit and controller			Width [mm]	Cooling power [-10°ET]	Connection	
	round	angled	slanted	round	angled	slanted				
Euro-Counter 710 BE - DT 400 *	----	17339	17341	----	17340	17342	522	370 W	230V/350W	
Euro-Counter 710 BE - DT 800	10230	10405	17304	10232	10407	17306	922	450 W	230V/480W	
Euro-Counter 710 BE - 1200	10231	10406	17305	10233	10408	17307	1322	605 W	230V/600W	
Euro-Counter 710 BE - 1600	10673	10674	10675	10683	10684	10685	1722	825 W	230V/715W	
Euro-Counter 710 BE - 1600 D **	14807	14809	14811	14808	14810	14812	1722	825 W	230V/715W	
<b>Door opening &gt; 400 mm</b>										
Euro-Counter 710 BE - 800	22453	11594	22454	22455	22456	22457	922	450 W	230V/480W	

The FRESHNESS SYSTEM (circulated air disinfection) protective machine cover and condensate pan/drain trap are available as accessories.

The version "DT" has wing doors on the operator side instead of sliding doors.

\* Not available with FRESHNESS SYSTEM.

\*\* Two temperature zones.

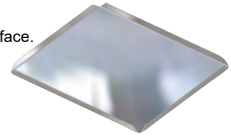
### Special Accessories

Condensate pan mounted under the cooling unit	<b>Art.-No.</b> 33266
Condensate pan mounted under the cooling unit (2 temperature zones)	<b>Art.-No.</b> 33196
Drain fitting 1 1/4" for connecting to the customer's drain	<b>Art.-No.</b> 3815
Protective machine cover type 370/450	<b>Art.-No.</b> 8179
Protective machine cover type 605	<b>Art.-No.</b> 8180
Protective machine cover type 825/980	<b>Art.-No.</b> 8181
Protective machine cover type 605-825 (2 temperature zones)	<b>Art.-No.</b> 33195
<b>Air cooler for operation with refrigerant CO<sub>2</sub></b>	<b>Art.-No.</b> 10197
(price per air cooler, model 1600 D with 2 air coolers, design see page 384)	
Sliding door lockable	<b>Art.-No.</b> 10147
Wing door DT lockable	<b>Art.-No.</b> 30005
Option soft-close (soft-closing sliding doors)	<b>Art.-No.</b> 4711
<b>Patented WIHA FRESHNESS SYSTEM</b> see page 126.	
Suitable price label rails see page 161.	

### Display Trays

Design: Made entirely of stainless steel, ground surface. Set on edge on 4 sides, open corners.

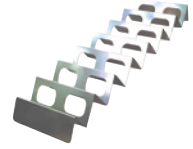
<b>Dimensions</b>	<b>Art.-No.</b>
600 x 400 x 10 mm	3670
600 x 200 x 10 mm	3671
400 x 400 x 10 mm	3655



### Snack Racks

For presentation of snacks. Made entirely of stainless steel, model with 7 or 5 compartments.

<b>Dimensions</b>	<b>Art.-No.</b>
90 x 595 mm	2676
180 x 595 mm	2681
180 x 390 mm	2682



### Description

Refrigerated display case with circulating air for cooling cakes, cream cakes and snacks. On the customer side with rounded, angled or slanted glass construction made of safety glass. The glass shelves are height adjustable and can be set at an angle, which means better presentation. Temperature: < 7°C at 25°C/60% relative humidity (climate class 3 according to DIN EN ISO 23953). Humidity: approx. 70% to 85%. Commercial product for the installation in stationary food and service counter.

### Design

Construction, merchandise display and interior pan are made entirely of stainless steel, material 1.4301. Pan interior is finished with 1 1/4" flush threaded drain fitting and hygienic corners that are easy to clean. Pressure-injected expanded polyurethane insulation. The exterior is made of galvanised sheet steel. Inside the pan is a generously sized circulating air evaporator with coated surface and quiet low-voltage ventilators (12 V DC) for air circulation. Located above the circulating air evaporator is a merchandise display made of ground stainless steel, material 1.4301. To clean the pan bottom, the merchandise display with circulating air evaporator and ventilators can be folded upwards and locked in the top position via gas pressure springs. For easy cleaning of the evaporator, it can be folded down (MOVE-DOWN FUNCTION) when the merchandise display is open. To clean the area behind the pan or to carry out servicing, the merchandise display can be moved forwards (MOVE-AWAY FUNCTION). The front glass pane is made of safety glass and can be swung outwards for easy cleaning. The side glass panes and the height adjustable shelves are also made of safety glass. For good illumination, a shielded LED light (standard colour: white) is mounted above each shelf. The shelves are suitable for Euro-Norm dimensions (400 mm x 600 mm or 400 mm x 300 mm). The mounting lip makes installation easy. The shelves can be set at an angle, which means better presentation.

A digital defrosting and temperature controller is mounted beneath the cooling pan. The flat control panel (installation depth: approx. 20 mm) can be removed for mounting in the counter front (cable length: approx. 1 m).

**With WIHA-LONG-LIFE for a longer operating life of the cooling unit.**

**Version DT 400:**  
Wing door can also be hinged on the right side; hinges are included.

**Version DT:**  
The operator side has wing doors made of insulating glass.

**Otherwise:**  
The operator side has sliding doors made of insulating glass, easily removable for cleaning (without bottom rail).

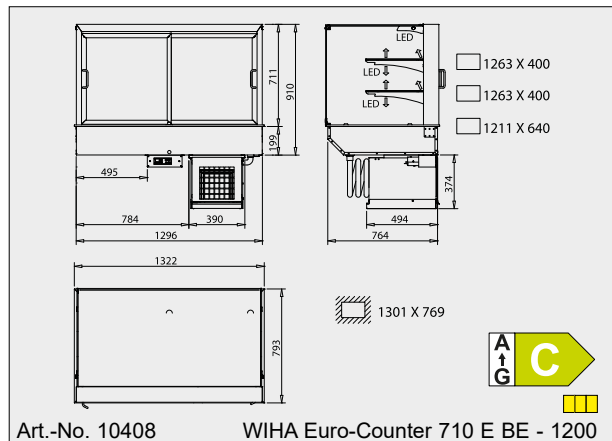
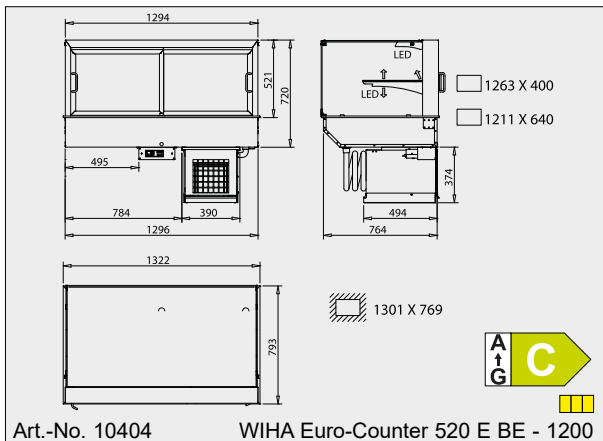
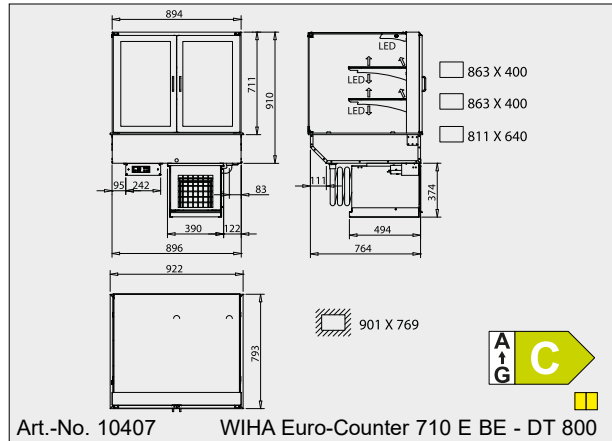
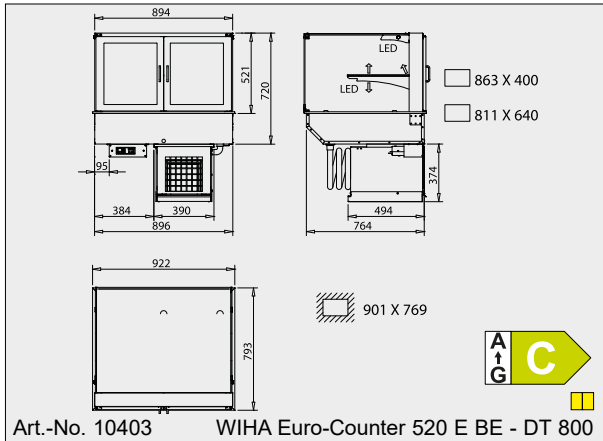
**Version 1600 D:**  
The refrigerated display case is divided with a glass partition in the middle. Both halves can be operated with different temperatures (2 thermostats).

### For External Cooling Unit

Delivery includes:  
- Expansion valve for R134a/R513A  
- Defrost and temperature controller

### Cooling Unit Model

The cooling unit is encased in a stainless steel housing and is located beneath the cooling pan. It is easy to remove for servicing. A condensate pan is available as accessory.



The drawings are shown with special accessory that is not included in the scope of delivery; more drawings are available on [www.wiha-web.com](http://www.wiha-web.com) under "Info Centre / Customer Area".